

Burnaby Gardens, London, W4 3DS

Guide Price £550,000

WHITMAN & CO.

SALES · LETTINGS · COMMERCIAL

- Period conversion flat
- Bright and spacious reception room
- Popular residential road
- Two double bedrooms
- Attractive semi-detached building
- No onward chain

Tenure - Leasehold with share of freehold
 Lease length - 96 Years remaining
 Ground Rent - £0 pa
 Service Charge - £452 pa
 Local authority - Hounslow
 Council tax - Band D

THE PROPERTY

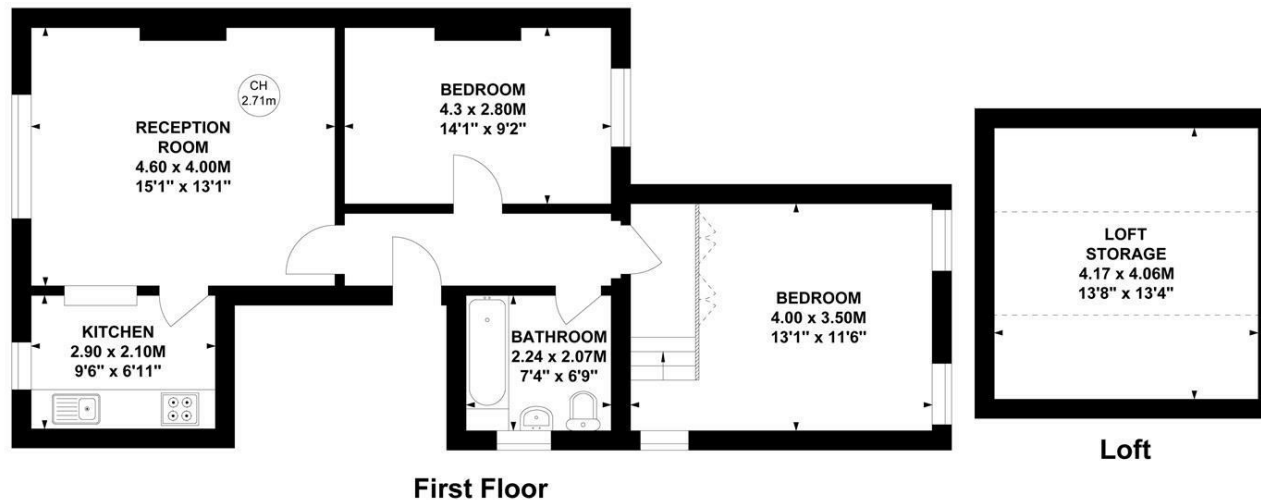
A lovely two bedroom first floor conversion flat within this attractive period semi-detached house located on this popular tree-lined residential road in the heart of the Grove Park area of Chiswick. The flat is well presented with a bright and spacious reception room with wood floors, two double bedrooms, a fitted kitchen, a bathroom and a good amount of loft storage. The flat also has a share of freehold. There is convenient access to local shops, cafes and restaurants, Strand on the Green riverside, Chiswick House and Grounds and Chiswick High Street with a number of local schools close by including OFSTED-rated outstanding Grove Park Primary. Transport links include Chiswick and Gunnersbury stations (8-9 mins walk), local bus routes and the A4/M4 for routes in and out of London. No onward chain.

Burnaby Gardens, W4

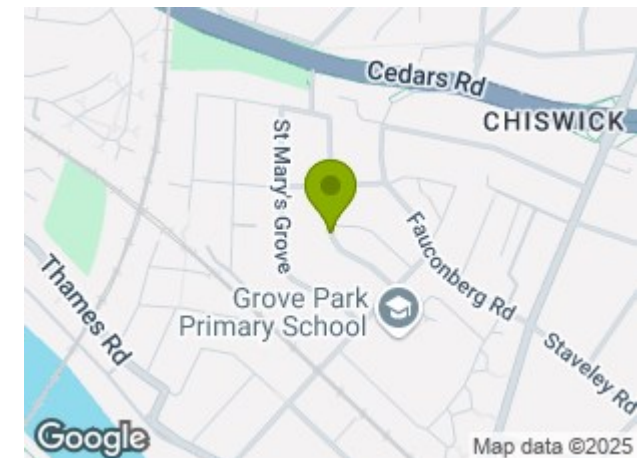
Approximate Gross Internal Area
80.78 sq m / 869 sq ft
 (Including Loft Storage)
Loft Storage
16.93 sq m / 182 sq ft



Key :
 CH - Ceiling Height



SITUATION



Not to scale, for guidance only and must not be relied upon as a statement of fact.
 All measurements and areas are approximate only

5-7 Turnham Green Terrace, Chiswick, London, W4 1RG

Tel 020 8747 8800

E-mail sales@whitmanandco.com

Website www.whitmanandco.com



MISREPRESENTATION ACT 1967

Whitman & Co. for themselves and for the vendors give notice that these particulars do not constitute any part of, an offer of contract. All statements contained in these particulars are made without responsibility on the part of Whitman & Co. or the vendor. None of the statements contained in these particulars is to be relied upon as statements or representations of facts. Any intending purchaser must satisfy himself by inspection or otherwise as to the correctness of each of the statements contained in these particulars. The vendor does not make or give, and neither Whitman & Co. or any person in their employment has any authority to make or give, any representation or warranty whatever in relation to the property.